

**THE MOST COST EFFECTIVE MODELS**

# VF Series Terminal

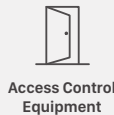
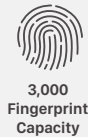
Fingerprint and RFID Access Control



VF10

VF30

VF20



Elegant and slim design  
Multiple identification method  
Felixble communication options

Richable access control interfaces  
Lower consumption an faster identification  
Securer standalone solution and easier integration



**VF Series** is professional access control systems designed for small and medium enterprises development of security. They integrate fingerprint identification, RFID card, burglar alarm, time attendance and access control functions etc., with fashion and elegant appearance and reliable structure. VF Series with powerful communication function WiFi, TCP/IP and Mini USB suitable for data management in various environments. It comes with a functional management software, with multiple language display, friendly user interface, and compatible with various types of database. also supports time zone and group access control for high security level. They are versatile, convenient and multi-functional.

## Features

**Outstanding optical waterproof, scratch-proof, unbreakable and durable fingerprint sensor**

**Unique infrared auto wakeup design**

**BioNano core algorithm platform of high performance and reliability**

**New 2017 version algorithm with improved performance on wet and dry fingerprints.**

**Support identification from different angles**

**Support multiple languages display. Suitable for local market.**

**White backlit keypad with 10 numeric keys and 7 function keys**

**Standard EM card reader. Optional Mifare card reader**

**RS485, Mini USB, WIFI & TCP/IP for network connection**

**Support wiegand26 output**

**Direct lock control to open door, door open sensor**

**Optional SC011 or any other standard access controller for separate type secure access control system**

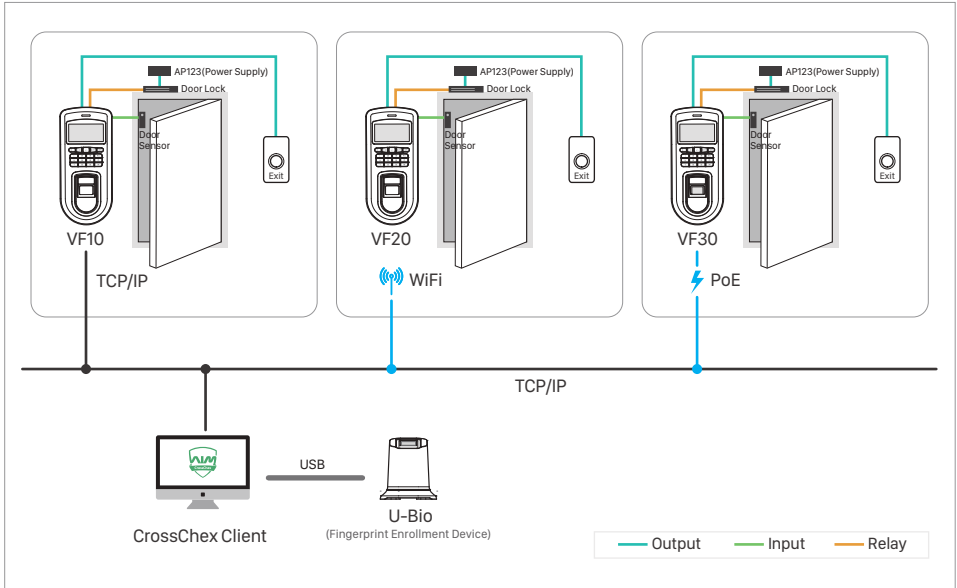
**Time zone and group access control, realtime data transfer monitor**

**Wall mounted, combine 2-in-1 function for access control and time attendance**

## Comparison of VF series

	VF10	VF20	VF30	
Capacity	User	1,000	3,000	
	Card	/		
	Record	50,000	200,000	
I/O	TCP/IP	Y		
	RS485	Y		
	Mini USB	Y		
	Wifi	/	Y	/
	Relay out	Y		
	I/O	Switch/Door Bell	Door contact/Switch/Door Bell	
	Tamper Alarm	/		Y
	Anti-pass back	Y		
	Wiegand	Out	In or Out	
	Identification Mode	Fingerprint, Password		Fingerprint, Password, RFID Card
	Identification Speed	<0.5s		
	RFID card reading distance	/		21 ~ 50 mm (0.8 to 3.1") depend on card type
Features	Image Display	Y		
	Group/Timezone	16/32		
	Time Attendance Support	Y		
	Message	Y		
	Daylight-saving Time	Y		
	Sound	Buzzer		
	Software	Anviz CrossChex		
	Fingerprint Sensor	AFOS touch active fingerprint sensor		
	Fingerprint Scanning Area	22m * 18mm		
Hardware	RFID Card	/	Standard EM, Optional Mifare	
	Dimensions(W x H x D)	80 * 180 * 40mm (3.2 * 7.1 * 1.6in)		
	Working temperature/humidity	-30°C to 60°C / 20% to 90%		
	POE	/		Y
	Power input	DC12V		

### System Configurations



### Work with Management Software



## CrossChex

Time Attendance and Access Control Management System



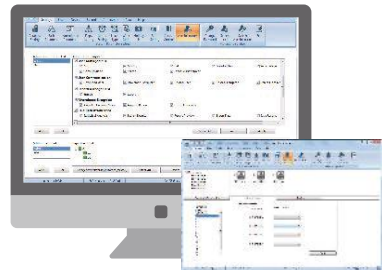
**Shift**  
Manual and intelligent shift schedule



**Access Group**  
Manual and intelligent access group



**Report**  
Flexible and Practical Report output



Anviz Global Inc.

44292 Fremont Blvd, Fremont, CA, USA, 94538

Tel: 408-2637700 | Toll-free:1-855-268-4948 | Inquiry: sales@anziv.com | www.anviz.com

©2018 Anviz Global Inc. Anviz and identifying product names and numbers herein are registered trademarks of Anviz Global Inc. All non-Anviz brands and product names are trademarks or registered trademarks of their respective companies. Product appearance, build status and/or specifications are subject to change without notice.

Due to the consistent improvement of the product, this specification and appearance are subject to change without notice.